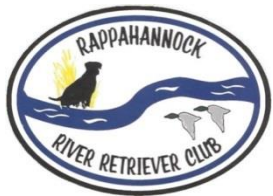


ZW part is obviously
made from a Futaba S3003





S3003

STANDARD
SIZE

RATINGS:

■ **SPEED:**

0.23sec/60° (at 4.8V)
0.19sec/60° (at 6.0V)

■ **TORQUE:**

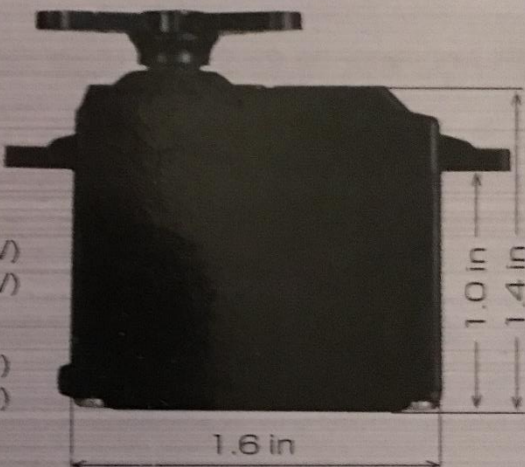
44.4 oz-in (at 4.8V)
56.9 oz-in (at 6.0V)

■ **SIZE:**

1.6x0.8x1.4 in

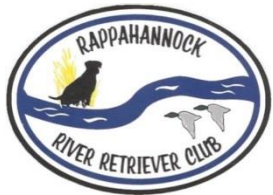
■ **WEIGHT:**

1.3 oz



Futaba®

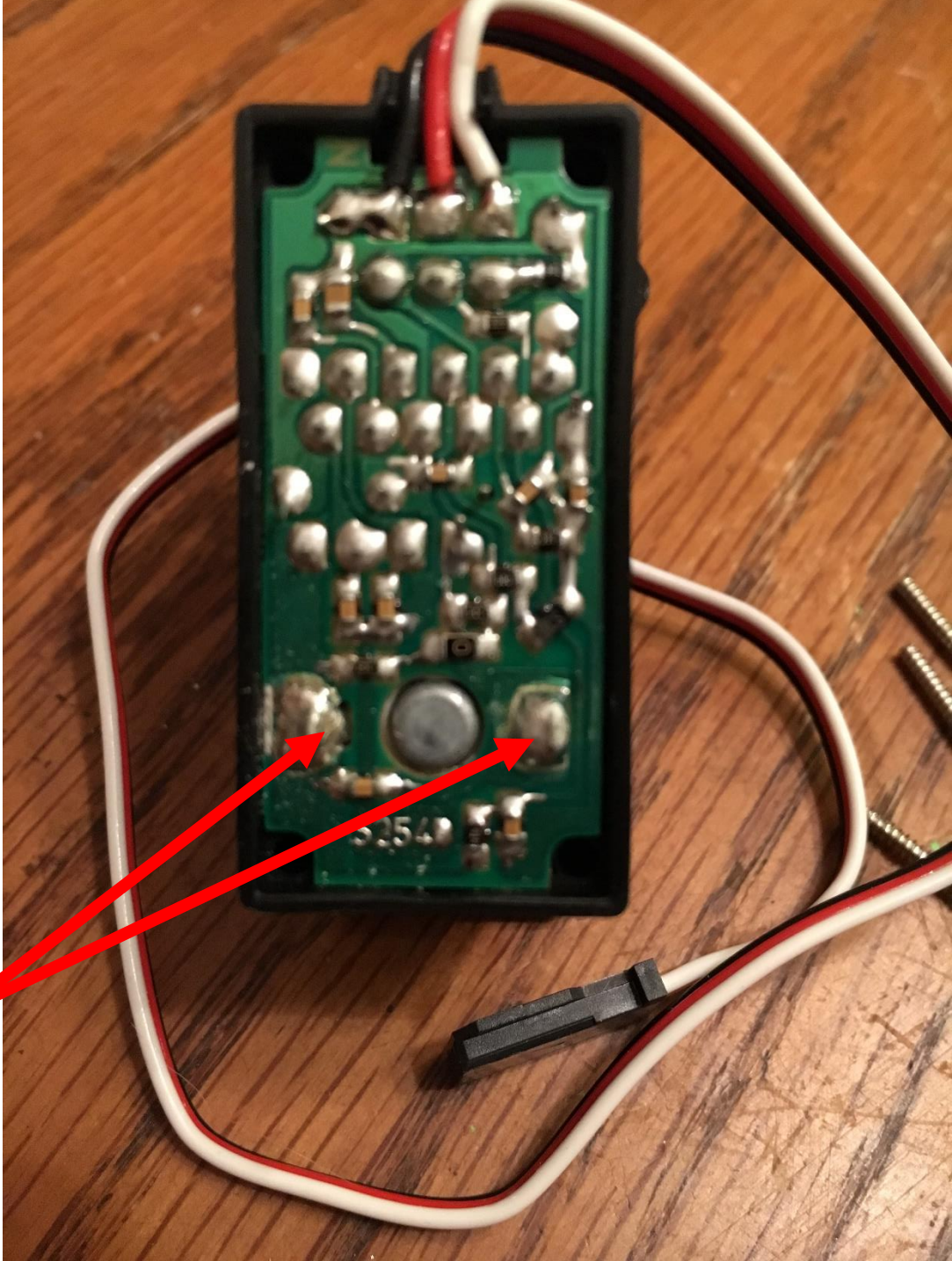


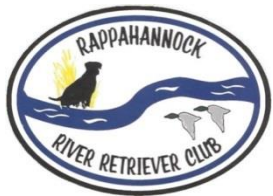


Remove cover

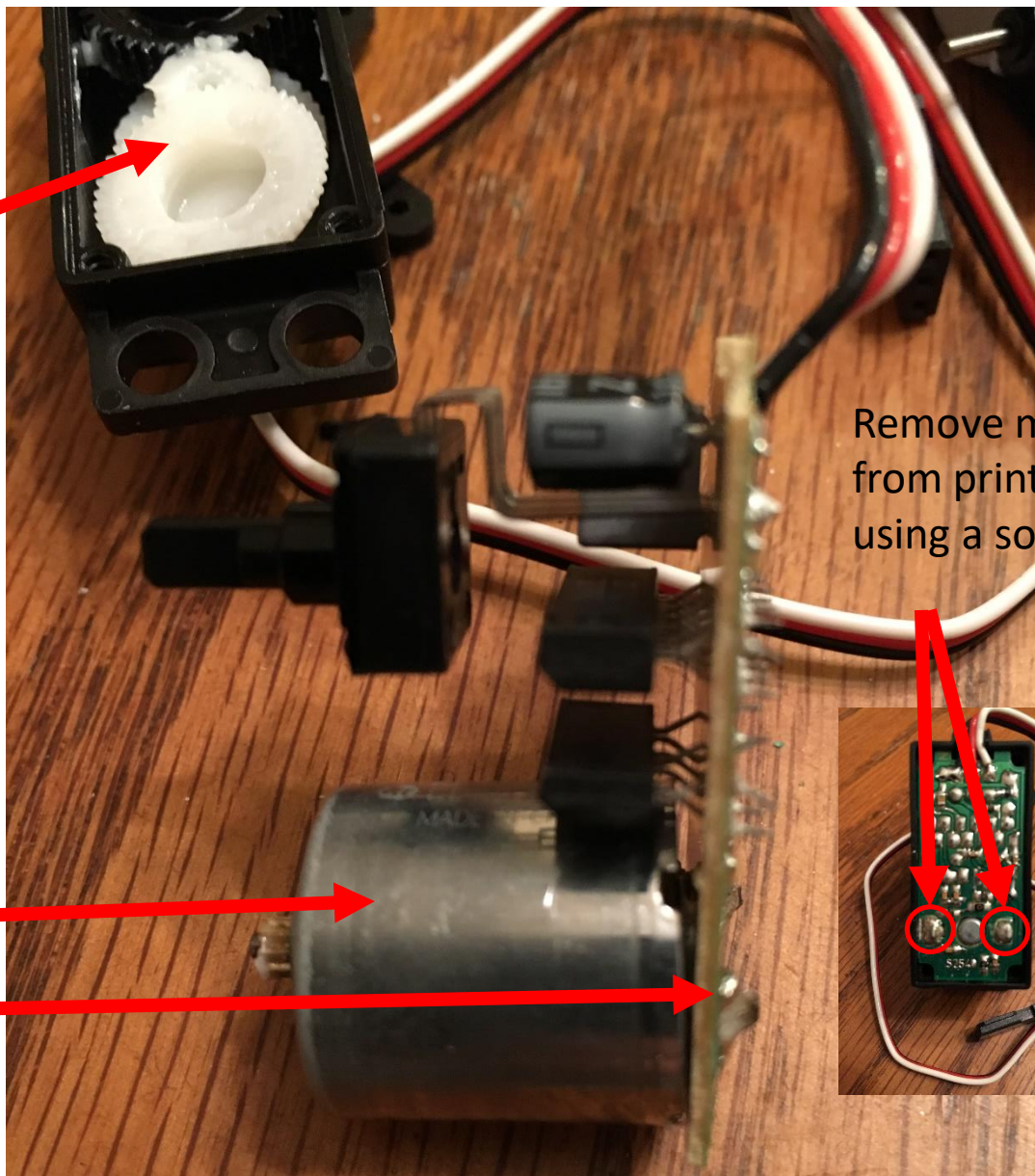
Pry printed wiring
Board and motor
from case

Where motor is
soldered to printed
wiring board

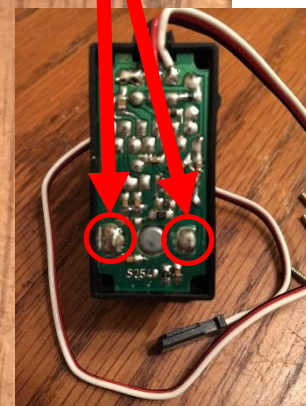




Try to keep cap w/ gears
on case – otherwise you
may have to put gears
back together

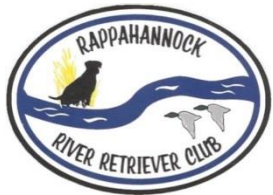


Remove motor
from printed wiring board
using a soldering iron



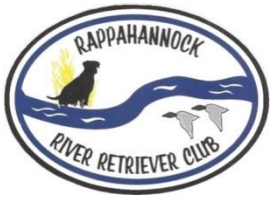
Motor

Printed wiring board



Insert motor back into case making sure to align gears and that turning actuator spindle turns armature in motor



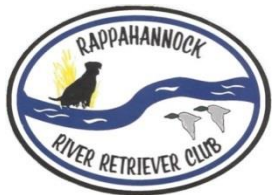


Solder wires to terminals
on motor and reassemble

You may want to seal the case with
Permatex RTV or plumbers caulk
to make it water tight

Replace actuator wheel with
actuator arm from the servo
that you are replacing





Same w/ Hobbico CS-60

